

 Konfurb



Konfurb Orbit.
Mid Back 5 Star.

buroseating.com

Konfurb by
buro
ergonomics at work®

Konfurb Orbit.

Acclaimed design.

The Konfurb Orbit chair is designed by internationally acclaimed architect and designer, Mac Stopa. This height-adjustable chair is characterised by a sleek and minimalist design, with a dominant 'wing' style that seamlessly complements various spaces including; relaxation spaces, reception areas and comfortable and informal workplace meeting spaces. Harmonise the black powder-coated 5 star swivel base with three stunning fabric colours – Charcoal, Rust, and Olive. For a personalised touch, opt for custom upholstery that complements your interiors.

Key Features & Benefits.

Orbit Everyday Model
5 Star Swivel Mid Back KON188

COLOUR HARMONY

Choose from 3 natural colour options or opt for custom upholstery.



STRONG METAL FRAME

Lightweight, durable & sustainable metal frame construction.



5 STAR SWIVEL BASE

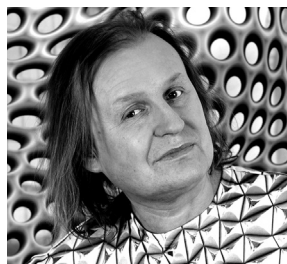
with height adjustable mech and locking tilt.

International Standards & Awards.

The Konfurb Orbit 5 Star chair is supported by the following internationally recognised standard:

- Tested to **ANSI/BIFMA X5.1-2017** General-Purpose Office Chairs

Designer.



Mac Stopa, award-winning architect and designer whose work spans several design disciplines. Designer of the Konfurb Orbit.

Features.

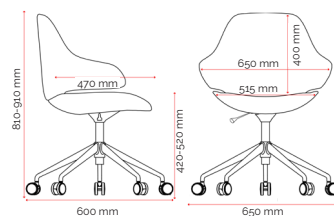
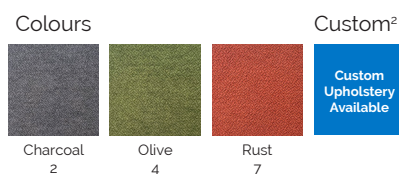
- Moulded foam on metal frame construction
- Black powdercoated aluminium 5 star swivel base
- 60mm PU castors
- Height adjustable mech with locking tilt
- Tool free assembly required

Specifications. (mm)

Overall	650w / 600d / 810-910h
Back	650w / 390h
Seat	515w / 470d
Seat Height	420-520h
Arm Height	590-690h

Carton Dimensions 730w / 670d / 380h

Colours.

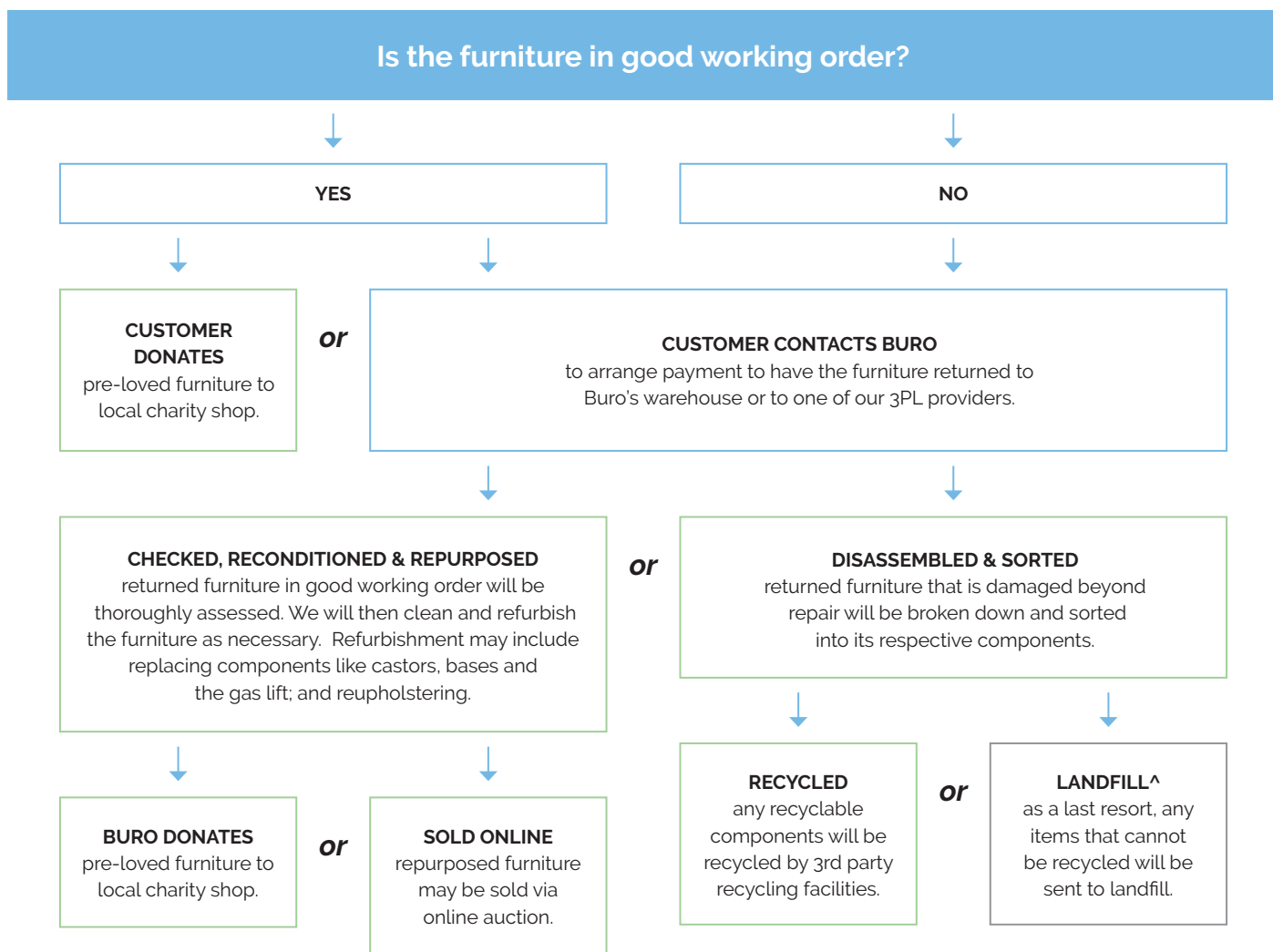


Quality Assurance and Accreditations.



Buro Product Stewardship Programme.

We encourage repurposing and recycling of pre-loved office furniture to reduce our impact on the environment. When a customer has Buro furniture* that they wish to dispose of, we apply the following steps to determine the most appropriate method.



To mitigate our CO2 footprint over the next 50 years, we're working with **Trees That Count**, a conservation charity dedicated to planting native trees.

By funding the planting of native trees, we're supporting efforts to increase biodiversity across New Zealand.

Buro proudly support **Greening Australia**.

Greening Australia has been restoring Australia's unique landscapes and protecting biodiversity at scale through collaborative, science-based programs for over 40 years.
www.greeningaustralia.org.au

As a **Sedex member** we are committed to being a responsible business, sourcing responsibly, and improving ethical standards and working conditions within the supply chain.

*Qualifying furniture must be Buro branded product (Buro Seating, Konfurb, Mondo), or a partner exclusive brand.
^Many of our products are GREENGUARD certified for safe emission levels. This reduces the environmental impact when sending any components to landfill.